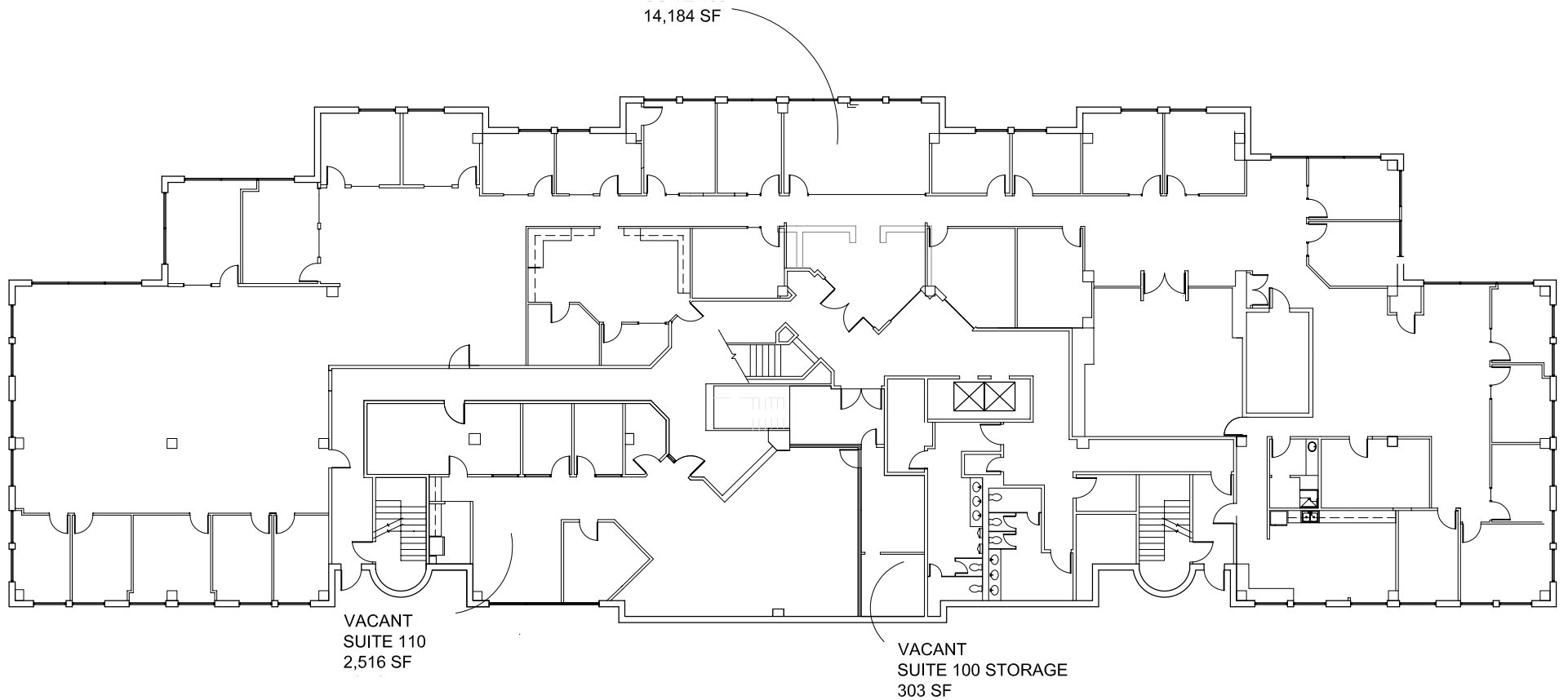


A PROPERTY OF

# MAIER SIEBEL BABER

REAL ESTATE INVESTMENT ADVISORS



FIRST FLOOR PLAN



SIXTH RIVER ARCHITECTS

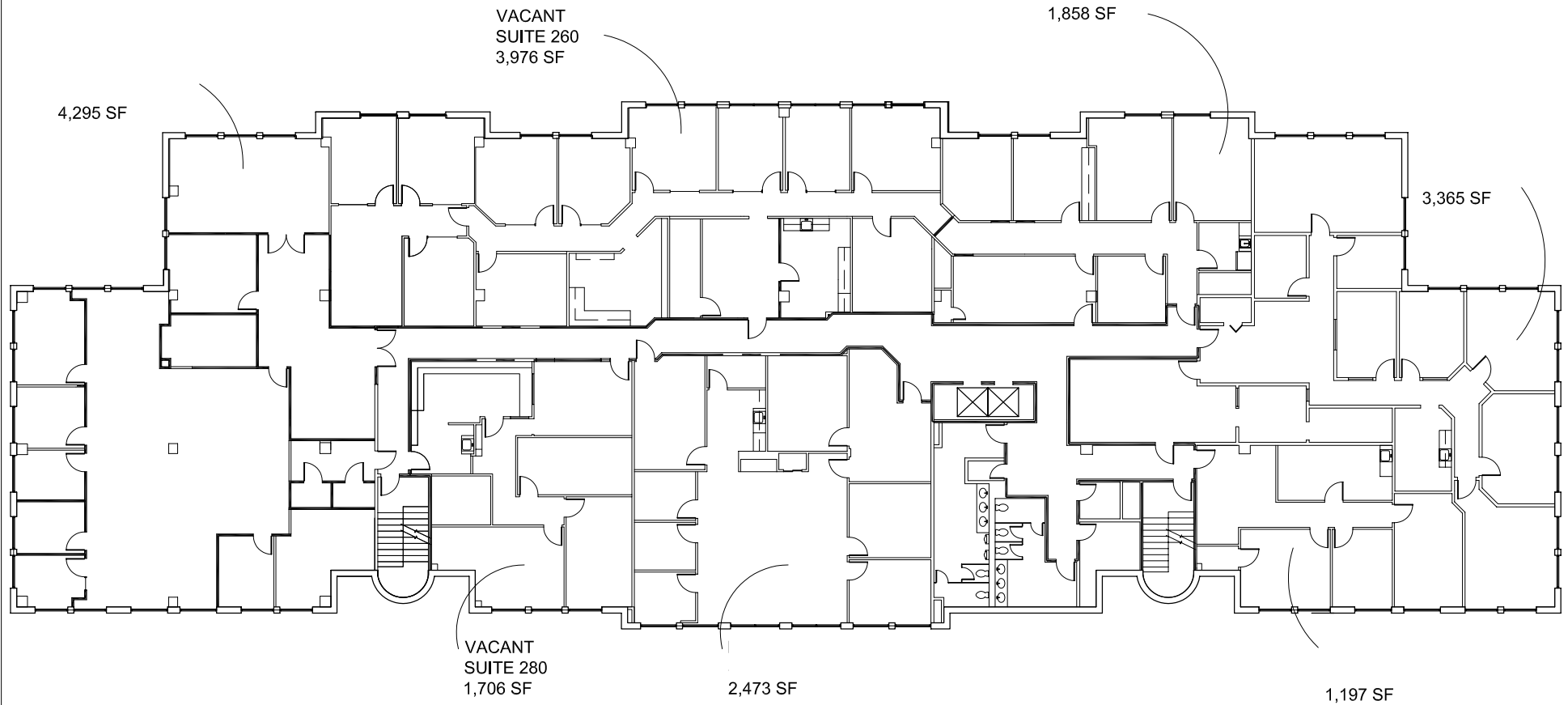
3601 SOUTH CONGRESS AVENUE  
SUITE G300  
AUSTIN, TEXAS 78704  
P 512 . 306 . 9928  
F 512 . 306 . 7928

CENTRE II  
3101 BEE CAVE ROAD  
AUSTIN, TEXAS

A PROPERTY OF

# MAIER SIEBEL BABER

REAL ESTATE INVESTMENT ADVISORS



SECOND FLOOR PLAN



SIXTH RIVER ARCHITECTS

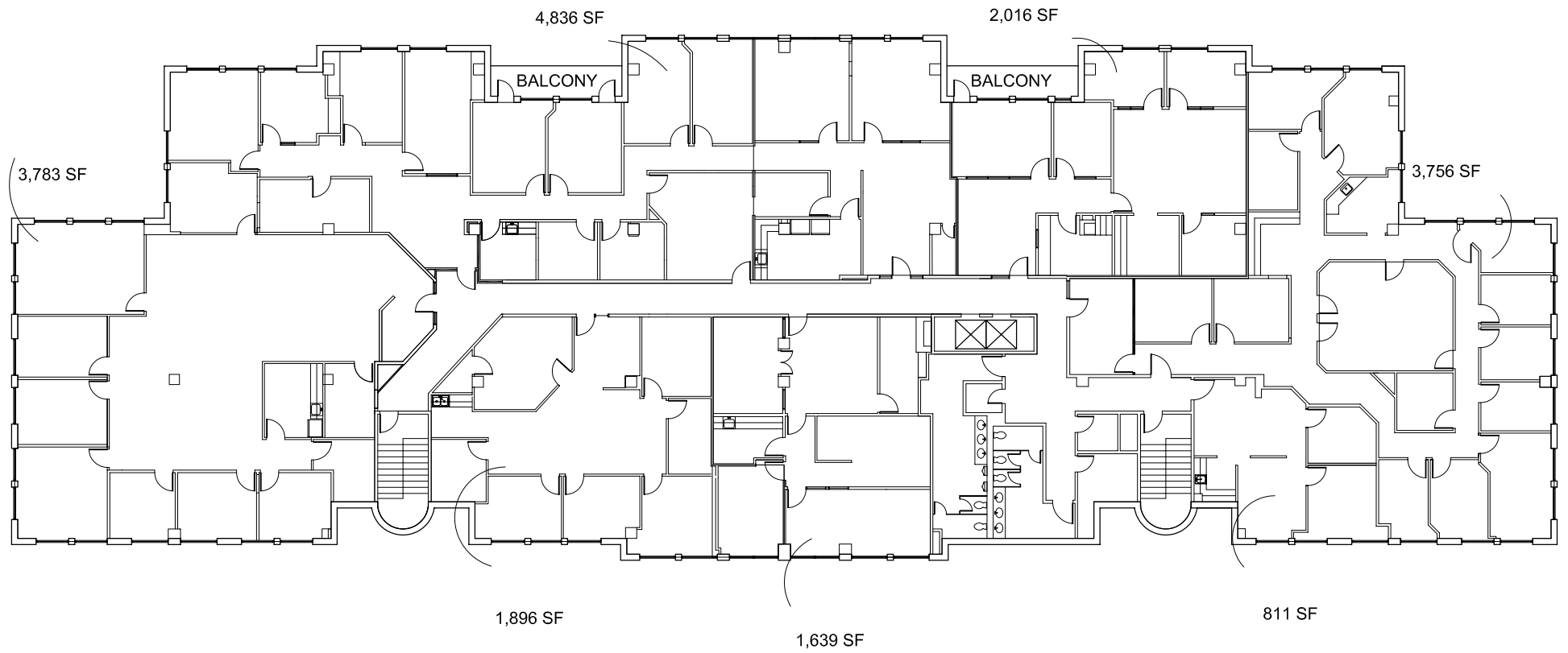
3601 SOUTH CONGRESS AVENUE  
SUITE G300  
AUSTIN, TEXAS 78704  
P 512 . 306 . 9928  
F 512 . 306 . 7928

CENTRE II  
3101 BEE CAVE ROAD  
AUSTIN, TEXAS

A PROPERTY OF

**MAIER SIEBEL BABER**

REAL ESTATE INVESTMENT ADVISORS



THIRD FLOOR PLAN



SIXTH RIVER ARCHITECTS

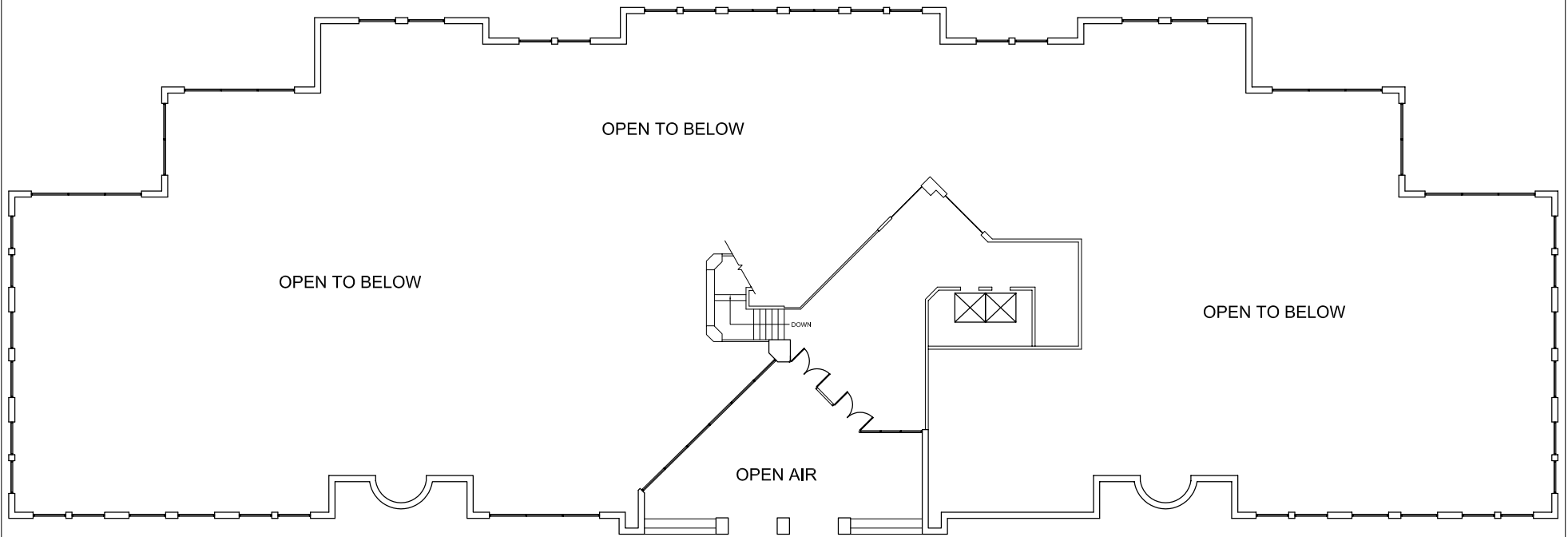
3601 SOUTH CONGRESS AVENUE  
SUITE G300  
AUSTIN, TEXAS 78704  
P 512 . 306 . 9928  
F 512 . 306 . 7928

**CENTRE II**  
**3101 BEE CAVE ROAD**  
**AUSTIN, TEXAS**

A PROPERTY OF

# MAIER SIEBEL BABER

REAL ESTATE INVESTMENT ADVISORS



MEZZANINE FLOOR PLAN



SIXTH RIVER ARCHITECTS

3601 SOUTH CONGRESS AVENUE  
SUITE G300  
AUSTIN, TEXAS 78704  
P 512 . 306 . 9928  
F 512 . 306 . 7928

CENTRE II  
3101 BEE CAVE ROAD  
AUSTIN, TEXAS